



# THE WEEKLY MO'OLELO

Wednesday, June 25, 2025



Keep up with the latest news from across Navy Region Hawaii. Click on any story to read the full version online. Some networks do not allow access to embedded links. For those readers, right click the PDF and open in your internet browser.

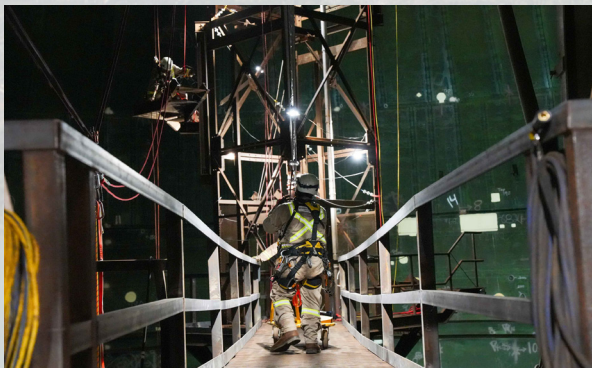
## Upcoming Events

- **Extended Drinking Water Monitoring Booths:** June 25, Kapilina Night Market, 5440 Edgewater Drive, from 4-8 p.m.; June 26, Pearl City Mini Mart, 794 Lehua Ave, from 10 a.m. to 1 p.m.



## Navy, NASA Release Draft EIS for PMRF, Kōke'e Park Geophysical Observatory

The Navy and NASA have prepared a Draft Environmental Impact Statement (EIS) for proposed continued use of State lands on Kauai for the Pacific Missile Range Facility and NASA's Kōke'e Park Geophysical Observatory through potential updated real estate agreements. The public is invited to review and comment on the Draft EIS. Public meetings will be held on Kaua'i from July 15–17. Each meeting will include a live online broadcast and public comment opportunity. Visit [PMRF-KPGO-EIS.com](https://PMRF-KPGO-EIS.com) for more information.



## NCTF-RH Submits Tank Closure Plan to Regulators

Navy Closure Task Force – Red Hill (NCTF-RH) submitted Supplement 4 of the Red Hill Bulk Fuel Storage Facility Closure Plan to the Hawaii Department of Health and the U.S. Environmental Protection Agency, marking a significant milestone in the facility's permanent closure. Supplement 4 builds on closure planning efforts from November 2022 through June 2024, and outlines the technical, physical, and regulatory steps NCTF-RH will take to safely and permanently close all tanks and associated infrastructure at Red Hill.



## Kauai Lineal Descendants Honor Ancestors at Summer Solstice Ceremony

Lineal descendants of West Kauai gathered at Pacific Missile Range Facility (PMRF) on Friday to honor Native Hawaiian ancestors of the Mānā Plain. The descendants were joined by PMRF personnel, council members and community partners at Lua Kupapa'u O Nohili (crypt) for Ka Māuiki'iki'i o ke Kauwela, the Summer Solstice. Participants presented offerings of lei and native plants. The crypt is near Nohili Dunes, a legendary and sacred space revered as a traditional gathering area and ancient burial ground.



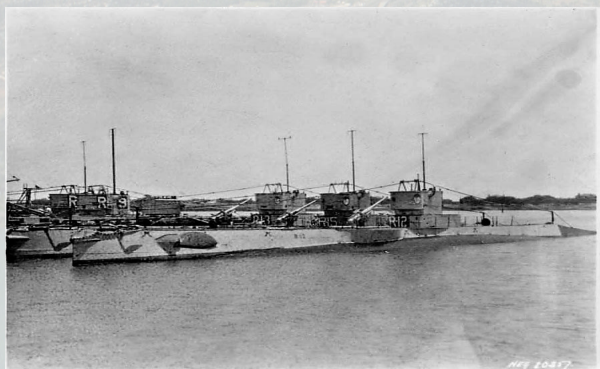
## NAVFAC Hawaii Awards Combined \$8 Billion Construction Contract

Naval Facilities Engineering Systems Command (NAVFAC) Hawaii has awarded a combined \$8 billion contract for new construction, repair, alteration, and related demolition of existing infrastructure in Hawaii and on Wake Island. Contracts were awarded to 11 companies some of which are based in Hawaii. The contract is expected to be completed by June 2033. Infrastructure is defined as residential, industrial or warehouse construction; or improvements such as utilities, land-scaping, airfields, roadways, dredging and waterfront work.



## Adm. Koehler Speaks at 15th Annual CSIS South China Sea Conference

Adm. Steve Koehler, commander of the U.S. Pacific Fleet, delivered remarks last week at the 15th Annual Center for Strategic and International Studies South China Sea Conference, an annual symposium for in-depth discussion and analysis of U.S. and Asian policy options on the South China Sea. Koehler addressed what he sees as two major trends: growing recognition that the South China Sea is part of a bigger regional picture and the effectiveness of deterrence in the area.



## This Week in History: June 25, 1919

On June 25, 1919, six new R-Class submarines (R15 thru R20), plus their submarine tender, the USS Beaver, arrived in Pearl Harbor to serve as Submarine Division Fourteen and the first submarines to be homeported at the new Pearl Harbor Submarine Base. Commander Chester Nimitz would take command of the division in July of 1920. Photo: Five of the six R-Class submarines of Submarine Division Fourteen tied up at Pearl Harbor in the mid-1920s.



Laulima Navy underscores our responsibility to the community and the ways we work alongside partners to help and support our neighbors. Service to others and a commitment to the greater good are values we hold in high regard. It is a privilege for all of us to call Hawaii home and we seek every opportunity we can to show how much we treasure this place. Scan the QR code to learn more about Laulima Navy.



FOR ACCESS TO NEWS, VIDEOS, AND PHOTOS FROM NAVY REGION HAWAII AND OTHER SERVICES, VISIT DEFENSE VISUAL INFORMATION DISTRIBUTION SERVICE (DVIDS), THE CNRH WEBSITE, OR FOLLOW US ON SOCIAL MEDIA.



/NavyRegionHawaii/  
/JBPHH  
/PacificMissileRangeFacility



Commander-navy-region-hawaii



/C-NRH /JBPHH  
/PMRF /NCTF-RH



/jointbasephh



/JointBasePHH  
/NavRegHawaii



cnrh.cnic.navy.mil/  
navyclosurereactionforce.navy.mil/